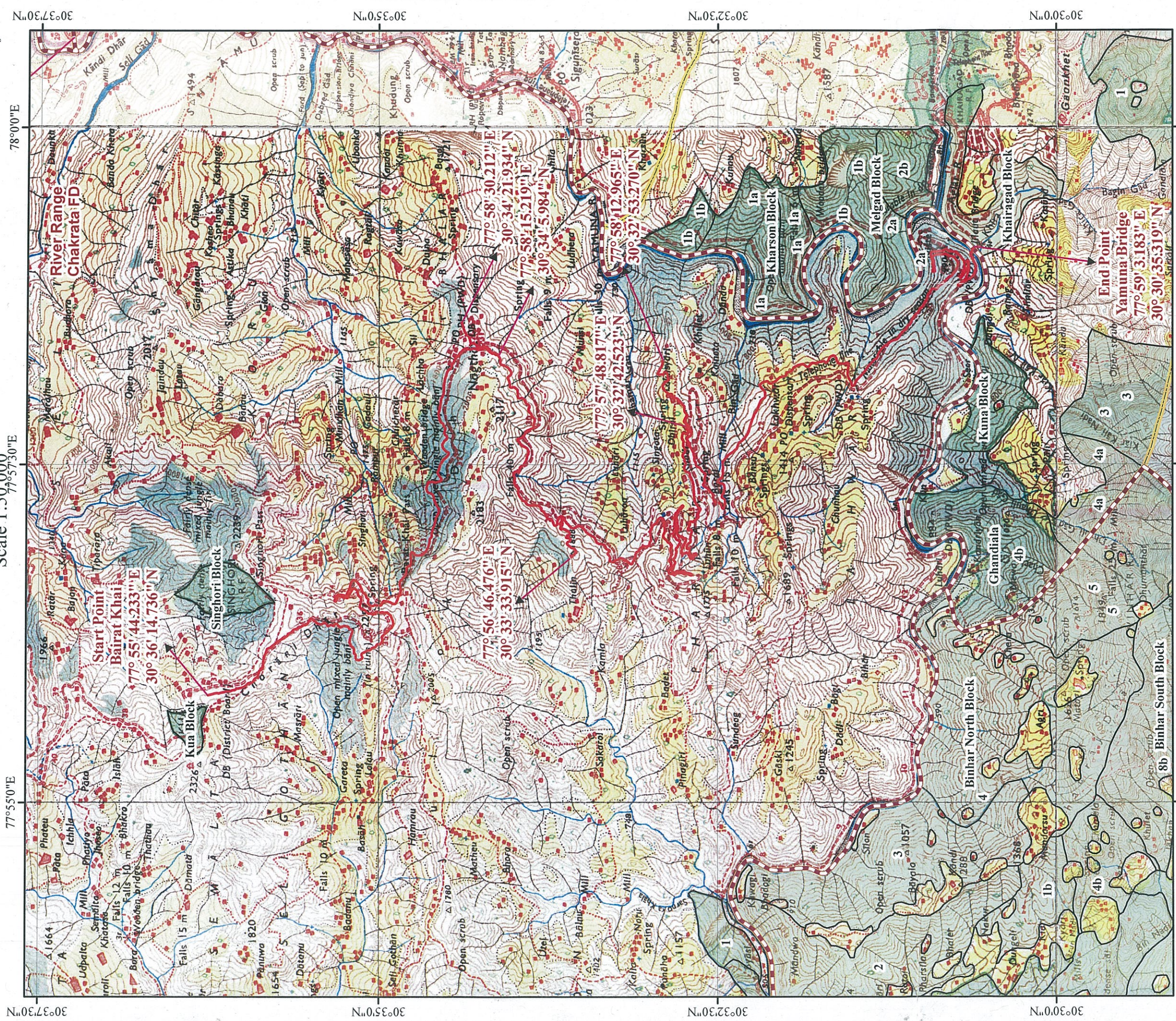


Toposheet Map of Proposed Route from Bairat Khai to Yamuna Bridge in Dehradun District for Infrastructure Development Project (IP1) for Digitalization of Rural & Urban Areas in Uttarakhand in Fwift Communication



Scale 1:50,000
77°57'30"E



- Legend**
- Proposed Route
 - Reserve Forest Area
 - Reserve Forest Boundary
 - Forest Range Boundary
 - Forest Division Boundary

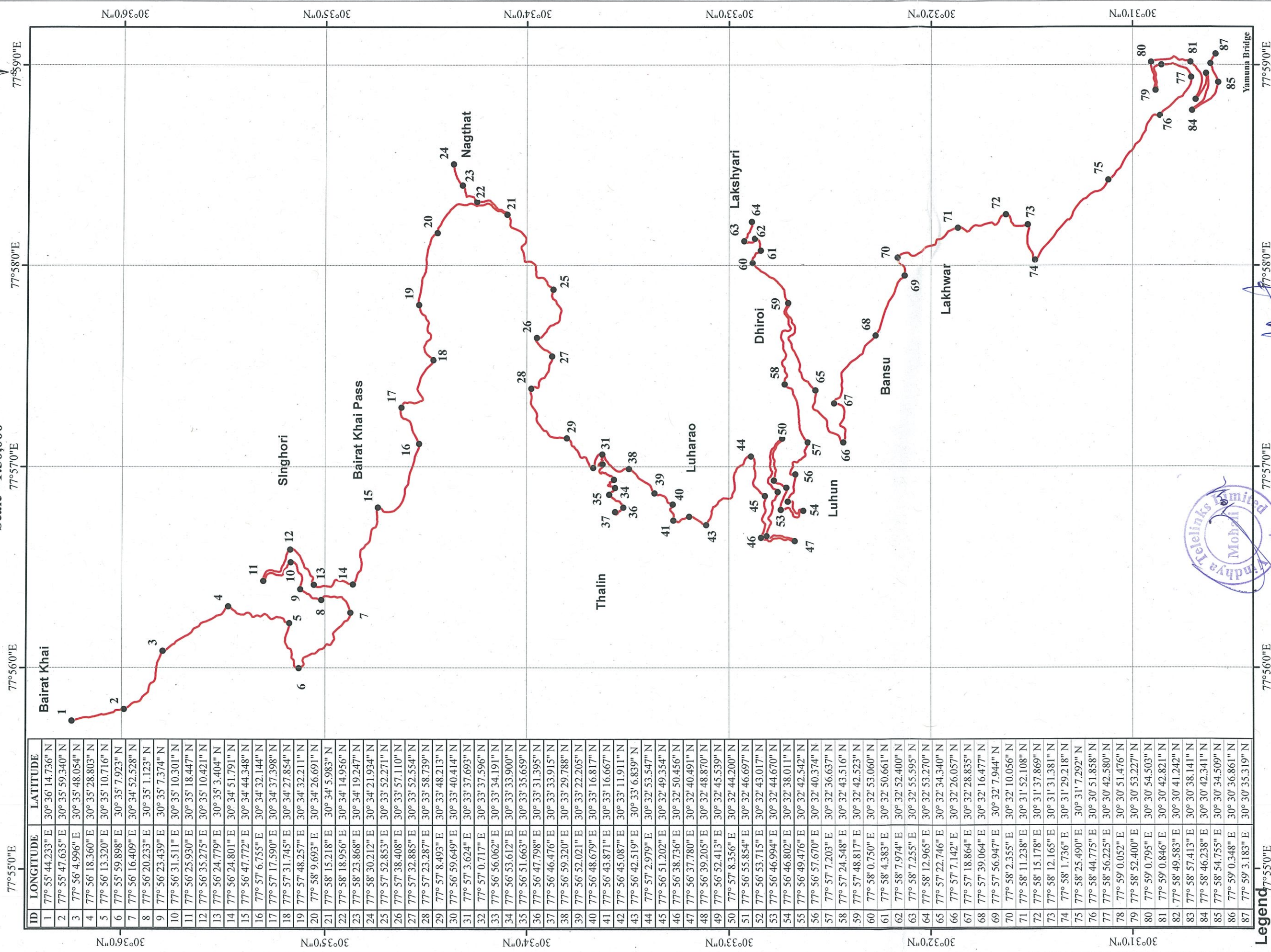


(Signature)
वन क्षेत्राधिकारी
रीवर रेंज
डाकपत्थर

Geo-reference Map of Proposed Route from Bairat Khai to Yamuna Bridge in Dehradun District for Infrastructure Development Project (IP1) for Digitalization of Rural & Urban Areas in Uttarakhand in Fwift Communication



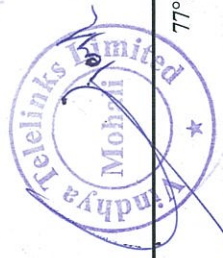
Scale - 1:30,000



ID	LONGITUDE	LATITUDE
1	77° 55' 44.233" E	30° 36' 14.736" N
2	77° 55' 47.635" E	30° 35' 59.340" N
3	77° 56' 4.996" E	30° 35' 48.054" N
4	77° 56' 18.360" E	30° 35' 28.803" N
5	77° 56' 13.320" E	30° 35' 10.716" N
6	77° 55' 59.898" E	30° 35' 7.923" N
7	77° 56' 16.409" E	30° 34' 52.528" N
8	77° 56' 20.233" E	30° 35' 1.123" N
9	77° 56' 23.439" E	30° 35' 7.374" N
10	77° 56' 31.511" E	30° 35' 10.301" N
11	77° 56' 25.930" E	30° 35' 18.447" N
12	77° 56' 35.275" E	30° 35' 10.421" N
13	77° 56' 24.779" E	30° 35' 3.404" N
14	77° 56' 24.801" E	30° 34' 51.791" N
15	77° 56' 47.772" E	30° 34' 44.348" N
16	77° 57' 6.755" E	30° 34' 32.144" N
17	77° 57' 17.590" E	30° 34' 37.398" N
18	77° 57' 31.745" E	30° 34' 27.854" N
19	77° 57' 48.257" E	30° 34' 32.211" N
20	77° 58' 9.693" E	30° 34' 26.691" N
21	77° 58' 15.218" E	30° 34' 5.983" N
22	77° 58' 18.956" E	30° 34' 14.956" N
23	77° 58' 23.868" E	30° 34' 19.247" N
24	77° 58' 30.212" E	30° 34' 21.934" N
25	77° 57' 52.853" E	30° 33' 52.271" N
26	77° 57' 38.408" E	30° 33' 57.110" N
27	77° 57' 32.885" E	30° 33' 52.554" N
28	77° 57' 23.287" E	30° 33' 58.739" N
29	77° 57' 8.493" E	30° 33' 48.213" N
30	77° 56' 59.649" E	30° 33' 40.414" N
31	77° 57' 3.624" E	30° 33' 37.693" N
32	77° 57' 0.717" E	30° 33' 37.596" N
33	77° 56' 56.062" E	30° 33' 34.191" N
34	77° 56' 53.612" E	30° 33' 33.900" N
35	77° 56' 51.663" E	30° 33' 35.659" N
36	77° 56' 47.798" E	30° 33' 31.395" N
37	77° 56' 46.476" E	30° 33' 33.915" N
38	77° 56' 59.320" E	30° 33' 29.788" N
39	77° 56' 52.021" E	30° 33' 22.205" N
40	77° 56' 48.679" E	30° 33' 16.817" N
41	77° 56' 43.871" E	30° 33' 16.667" N
42	77° 56' 45.087" E	30° 33' 11.911" N
43	77° 56' 42.519" E	30° 33' 6.839" N
44	77° 57' 2.979" E	30° 32' 53.547" N
45	77° 56' 51.202" E	30° 32' 49.354" N
46	77° 56' 38.736" E	30° 32' 50.456" N
47	77° 56' 37.780" E	30° 32' 40.491" N
48	77° 56' 39.205" E	30° 32' 48.870" N
49	77° 56' 52.413" E	30° 32' 45.539" N
50	77° 57' 8.356" E	30° 32' 44.200" N
51	77° 56' 55.854" E	30° 32' 46.697" N
52	77° 56' 53.715" E	30° 32' 43.017" N
53	77° 56' 46.994" E	30° 32' 44.670" N
54	77° 56' 46.802" E	30° 32' 38.011" N
55	77° 56' 49.476" E	30° 32' 42.542" N
56	77° 56' 57.670" E	30° 32' 40.374" N
57	77° 57' 7.203" E	30° 32' 36.637" N
58	77° 57' 24.548" E	30° 32' 43.516" N
59	77° 57' 48.817" E	30° 32' 42.523" N
60	77° 58' 0.750" E	30° 32' 53.060" N
61	77° 58' 4.383" E	30° 32' 50.661" N
62	77° 58' 7.974" E	30° 32' 52.400" N
63	77° 58' 7.255" E	30° 32' 55.595" N
64	77° 58' 12.965" E	30° 32' 53.270" N
65	77° 57' 22.746" E	30° 32' 34.340" N
66	77° 57' 7.142" E	30° 32' 26.057" N
67	77° 57' 18.864" E	30° 32' 28.835" N
68	77° 57' 39.064" E	30° 32' 16.477" N
69	77° 57' 56.947" E	30° 32' 7.944" N
70	77° 58' 2.355" E	30° 32' 10.056" N
71	77° 58' 11.238" E	30° 31' 52.108" N
72	77° 58' 15.178" E	30° 31' 37.869" N
73	77° 58' 12.165" E	30° 31' 31.381" N
74	77° 58' 1.736" E	30° 31' 29.218" N
75	77° 58' 25.490" E	30° 31' 7.292" N
76	77° 58' 44.775" E	30° 30' 51.858" N
77	77° 58' 56.225" E	30° 30' 42.580" N
78	77° 59' 0.052" E	30° 30' 51.476" N
79	77° 58' 52.400" E	30° 30' 53.227" N
80	77° 59' 0.795" E	30° 30' 54.503" N
81	77° 59' 0.846" E	30° 30' 42.821" N
82	77° 58' 49.583" E	30° 30' 41.242" N
83	77° 58' 57.413" E	30° 30' 38.141" N
84	77° 58' 46.238" E	30° 30' 42.341" N
85	77° 58' 54.755" E	30° 30' 34.509" N
86	77° 59' 0.348" E	30° 30' 36.861" N
87	77° 59' 3.183" E	30° 30' 35.319" N

Legend

- GPS Points
- Proposed Route



रविशंकर शर्मा
 सहायक निदेशक
 डी.आर.डी.
 देहरादून